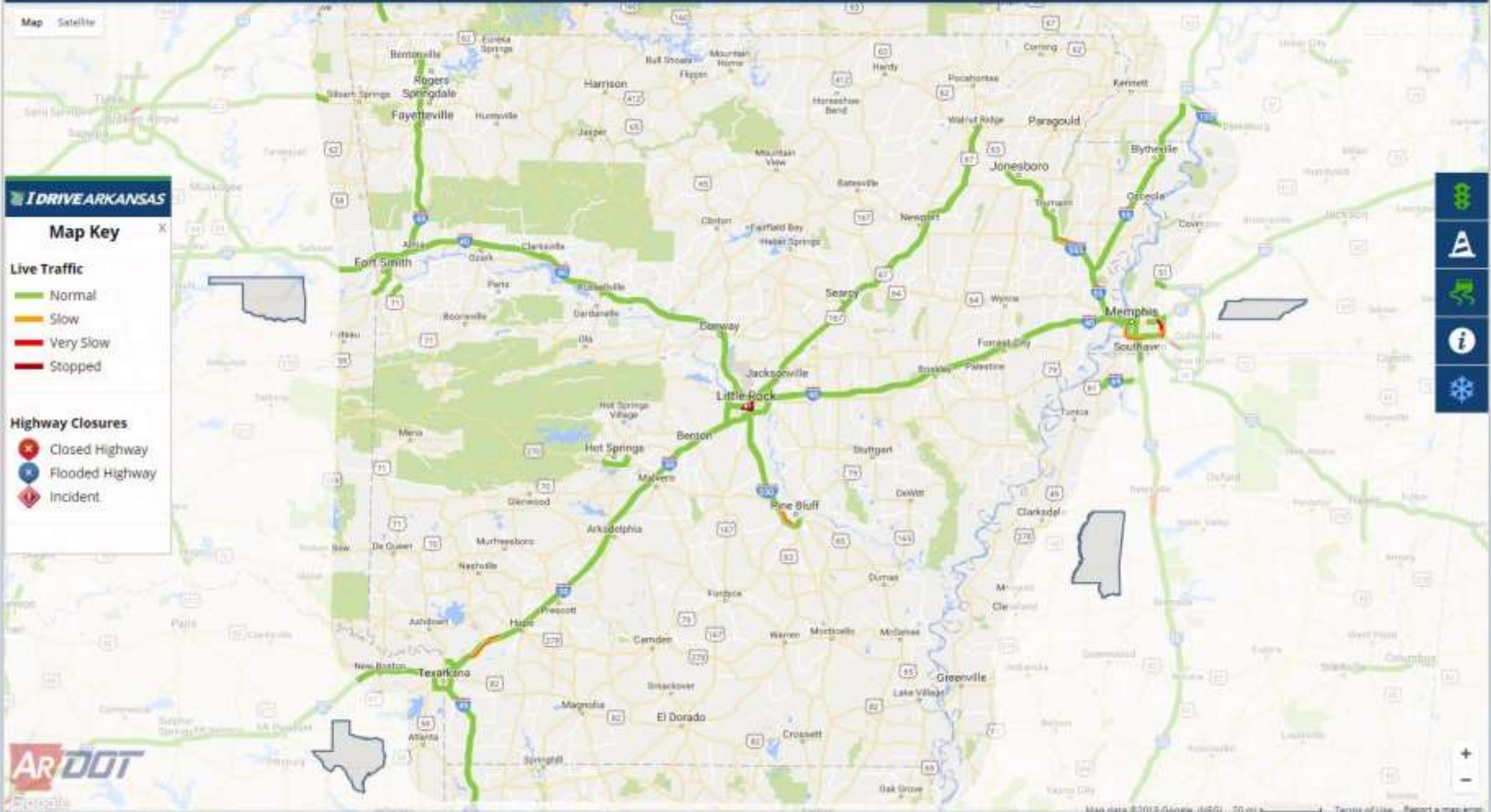


**Danny Straessle**  
**Public Information Officer**



**Pulaski Co. – Local Emergency Planning Committee**

Wednesday, December 12, 2018



**IDRIVE ARKANSAS**

**Map Key**

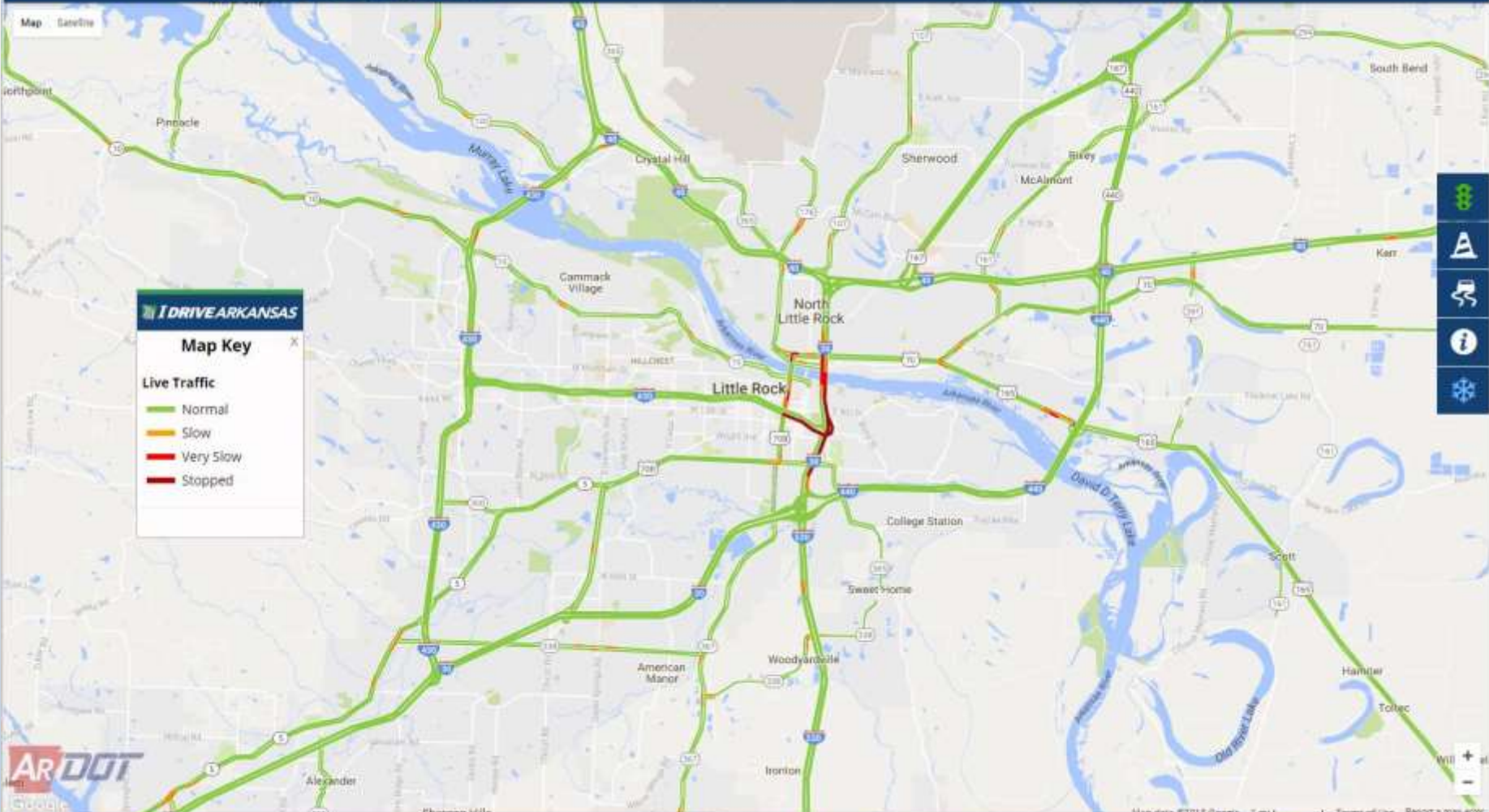
**Live Traffic**

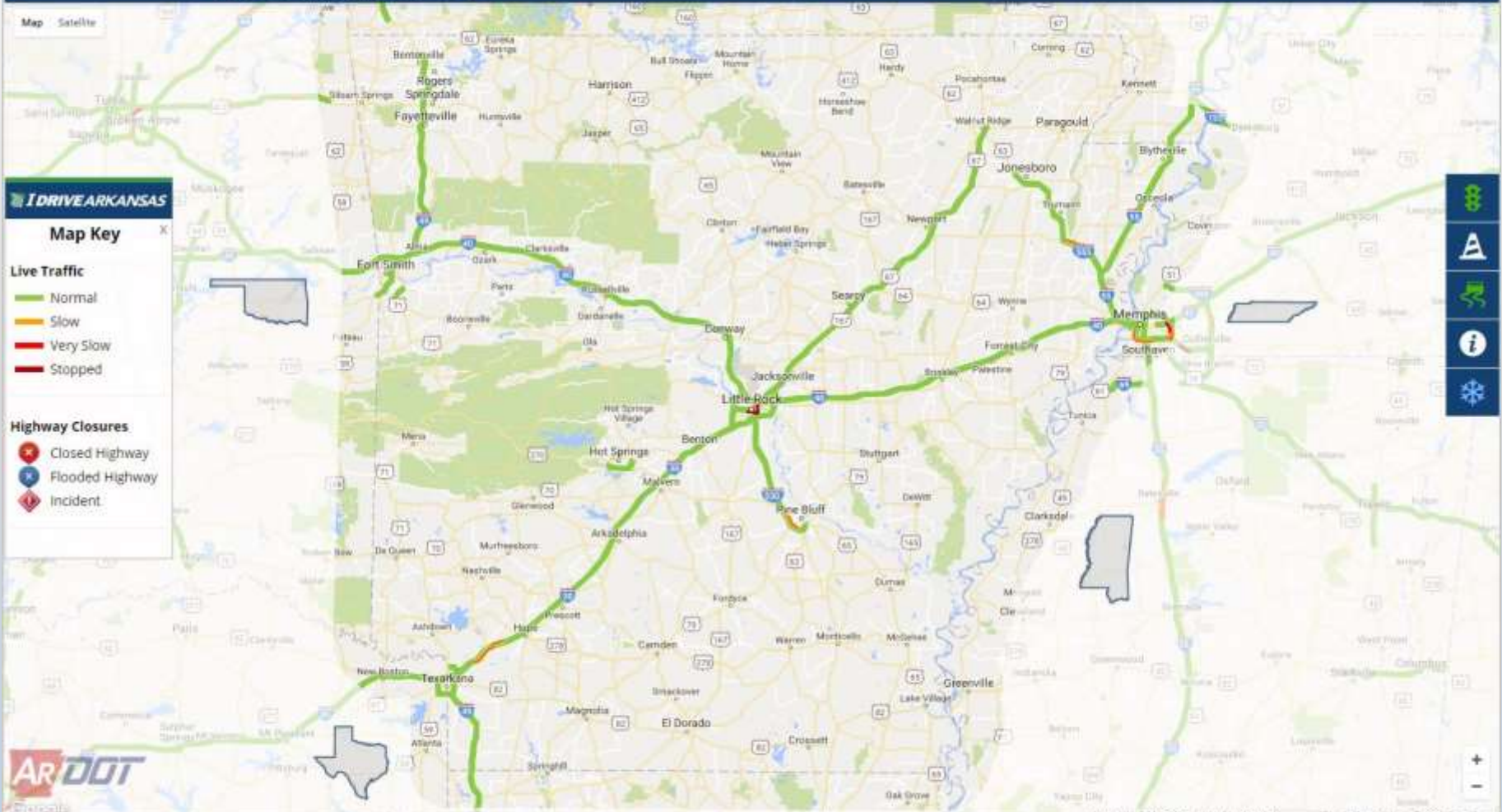
- Normal
- Slow
- Very Slow
- Stopped

**Highway Closures**

- Closed Highway
- Flooded Highway
- Incident

- Map
- Layers
- Info
- Settings





**I DRIVE ARKANSAS**

**Map Key**

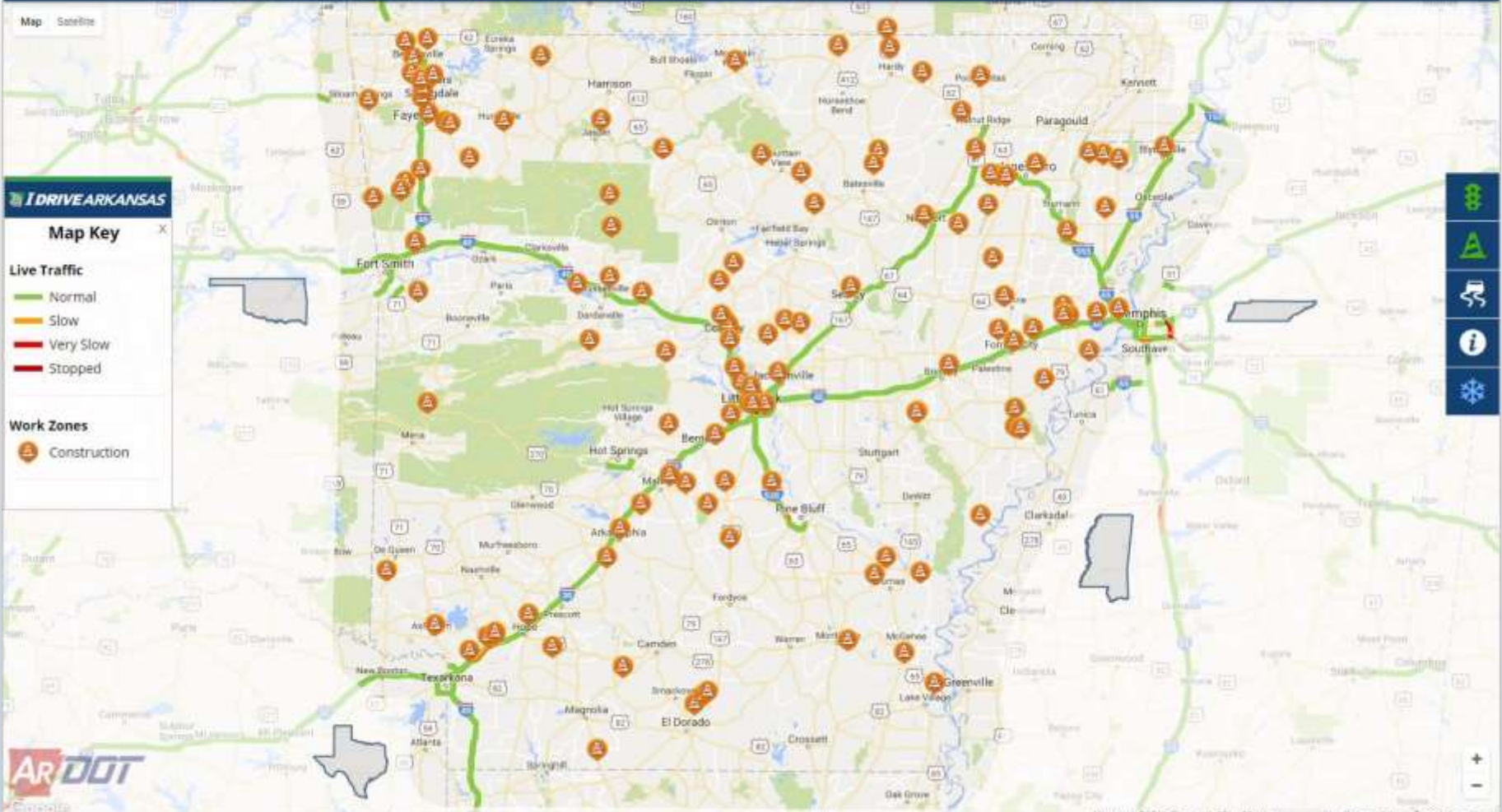
**Live Traffic**

- Normal
- Slow
- Very Slow
- Stopped

**Highway Closures**

- Closed Highway
- Flooded Highway
- Incident





**IDRIVE ARKANSAS**

**Map Key**

**Live Traffic**

- Normal
- Slow
- Very Slow
- Stopped

**Work Zones**

- Construction

- Traffic light icon
- Accident icon
- Weather icon
- Information icon
- Snow icon

# IDRIVE ARKANSAS

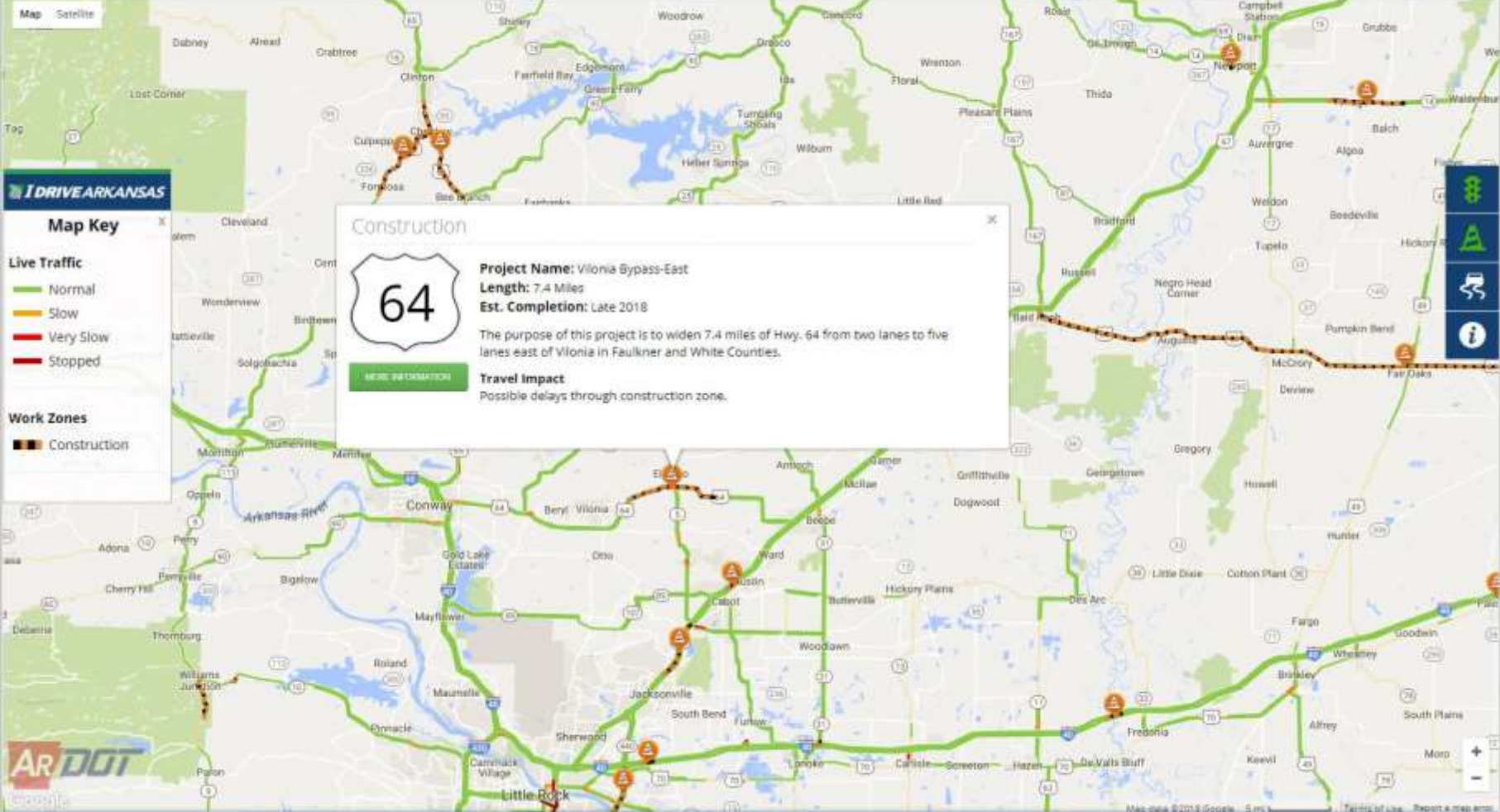
Map

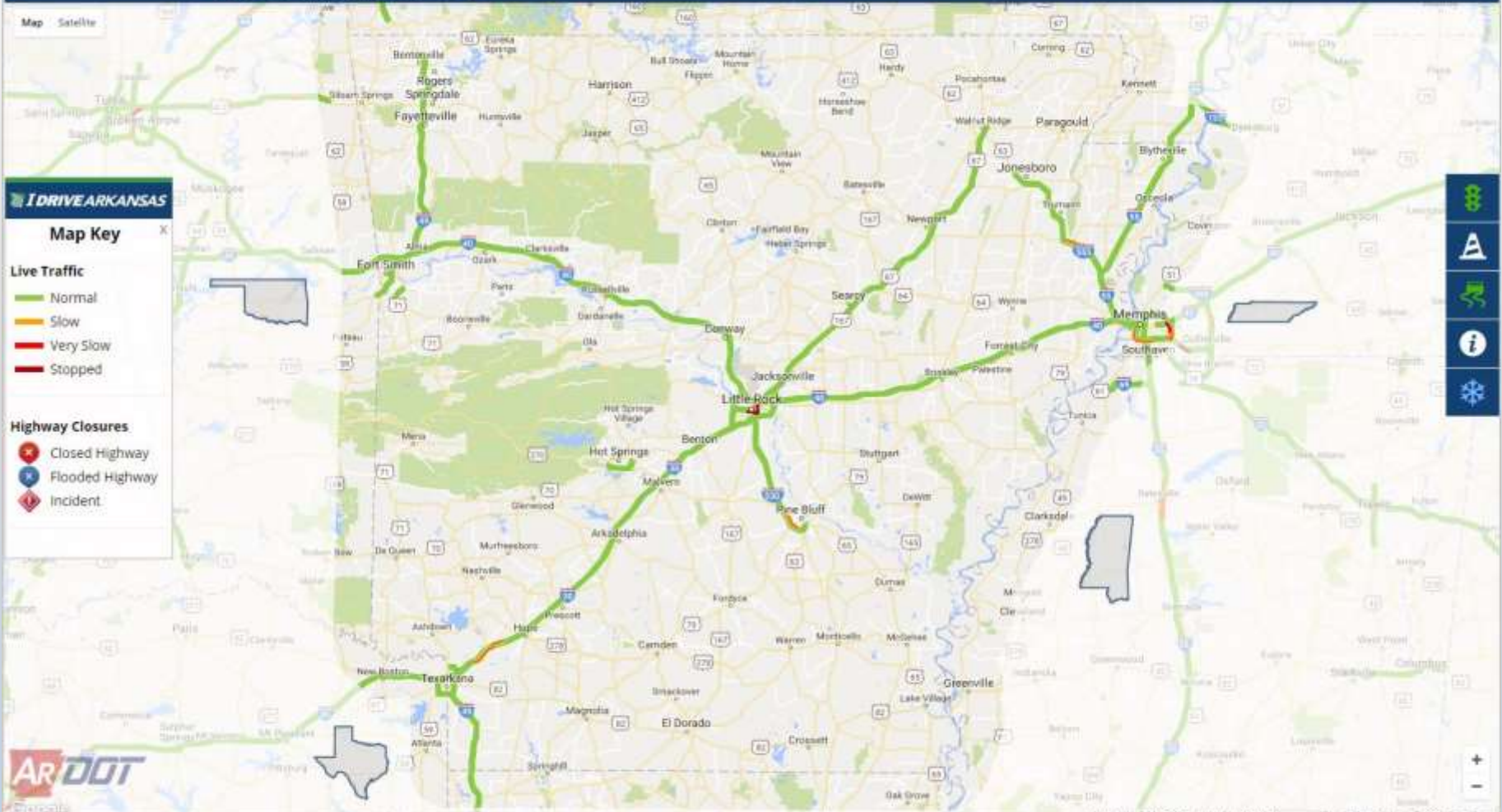
Construction Programs

Travel Information Report

Contact







**IDRIVE ARKANSAS**

**Map Key**

**Live Traffic**

- Normal
- Slow
- Very Slow
- Stopped

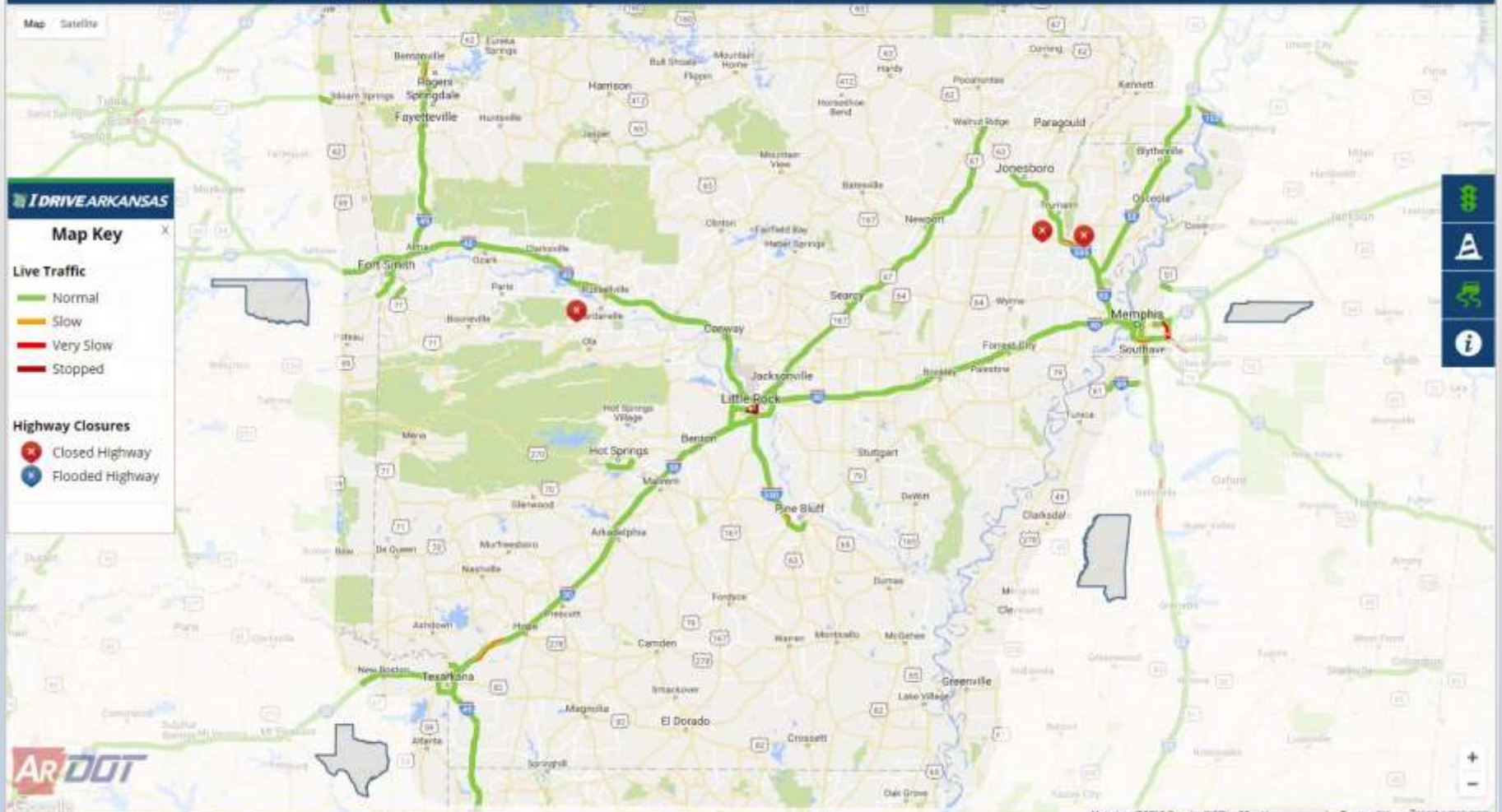
**Highway Closures**

- Closed Highway
- Flooded Highway
- Incident

- Map Style
- Layers
- Info
- Weather







**IDRIVE ARKANSAS**

**Map Key** X

**Live Traffic**

- Normal (Green line)
- Slow (Yellow line)
- Very Slow (Red line)
- Stopped (Dark Red line)

**Highway Closures**

- Closed Highway (Red X icon)
- Flooded Highway (Blue circle icon)

Map Satellite

**IDRIVE ARKANSAS**

**Map Key**

**Live Traffic**

- Normal
- Slow
- Very Slow
- Stopped

**Highway Closures**

- ✖ Closed Highway
- ⓘ Flooded Highway

Highway Closures



**Poinsett County**

**Closure Reason:** Bridge Issue

**Travel Direction:** Both

**Lane(s) Closed:** All

**Total Distance:** 0.2 Mile

**Detour:** None

**Date / Time:** March 5, 2018 at 11:56 AM CST

**Last Update:** May 7, 2018 at 9:59 AM CDT

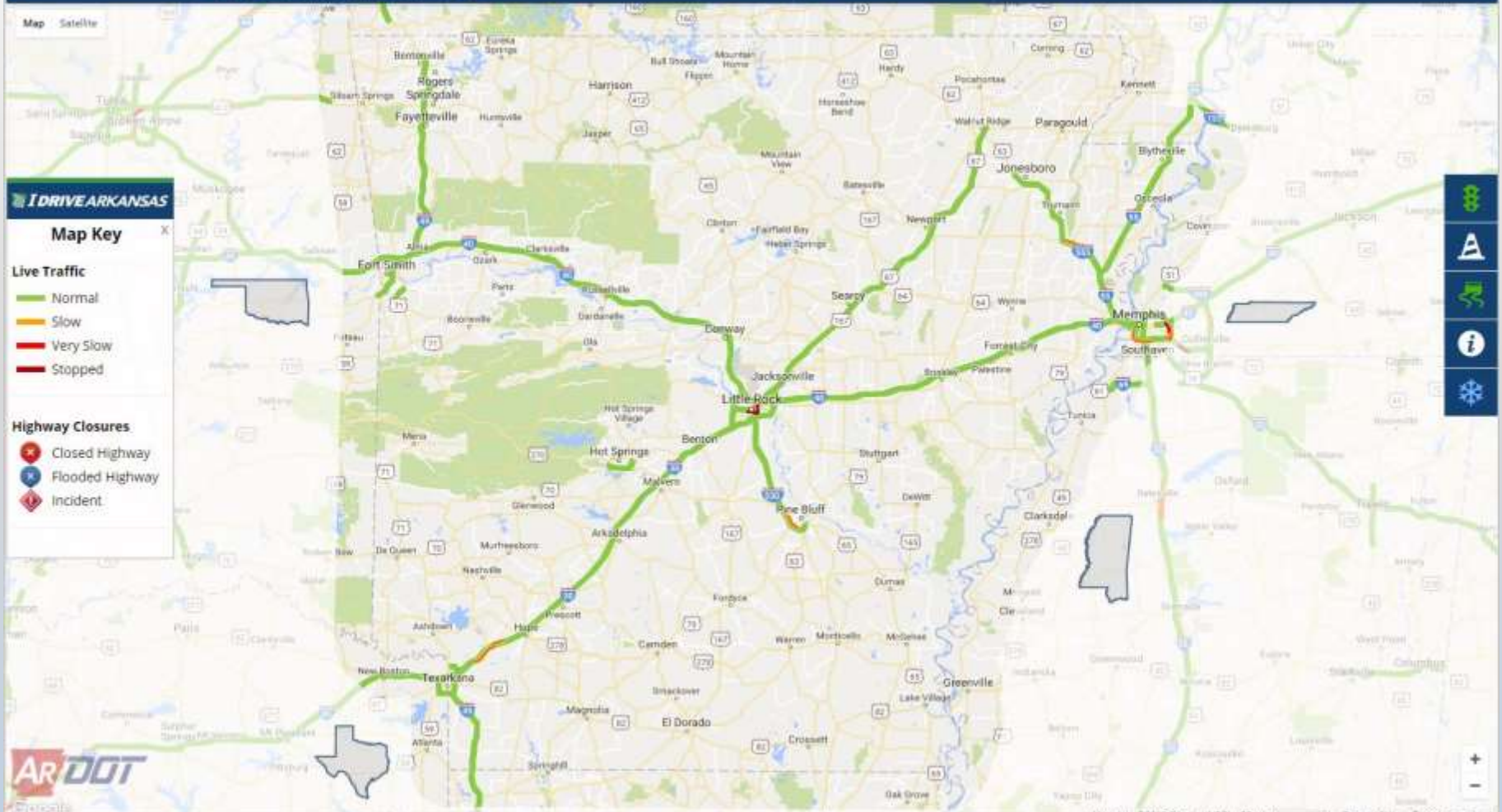
**Note:** All information is the latest available and presented in real-time.

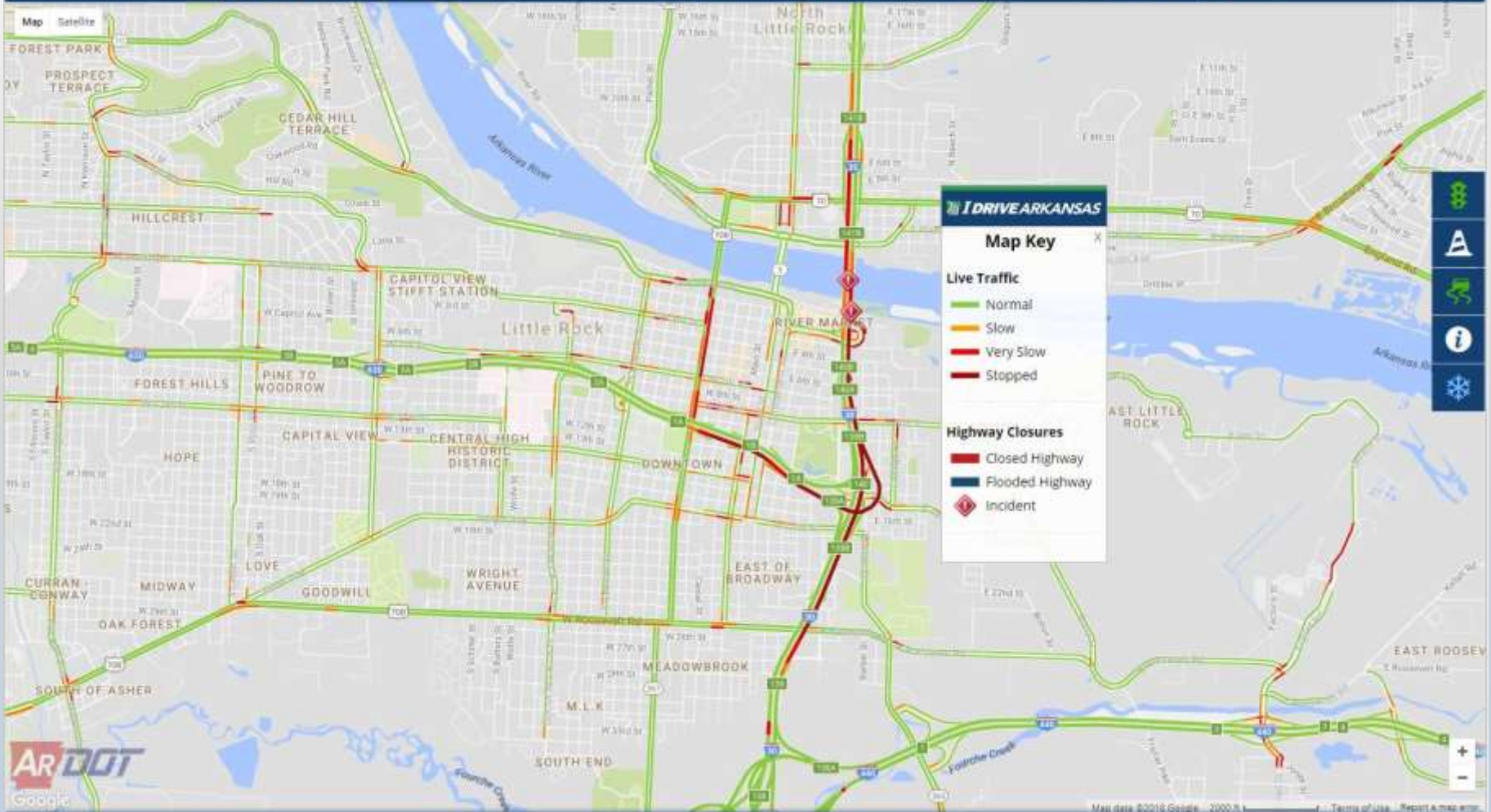
**Description**

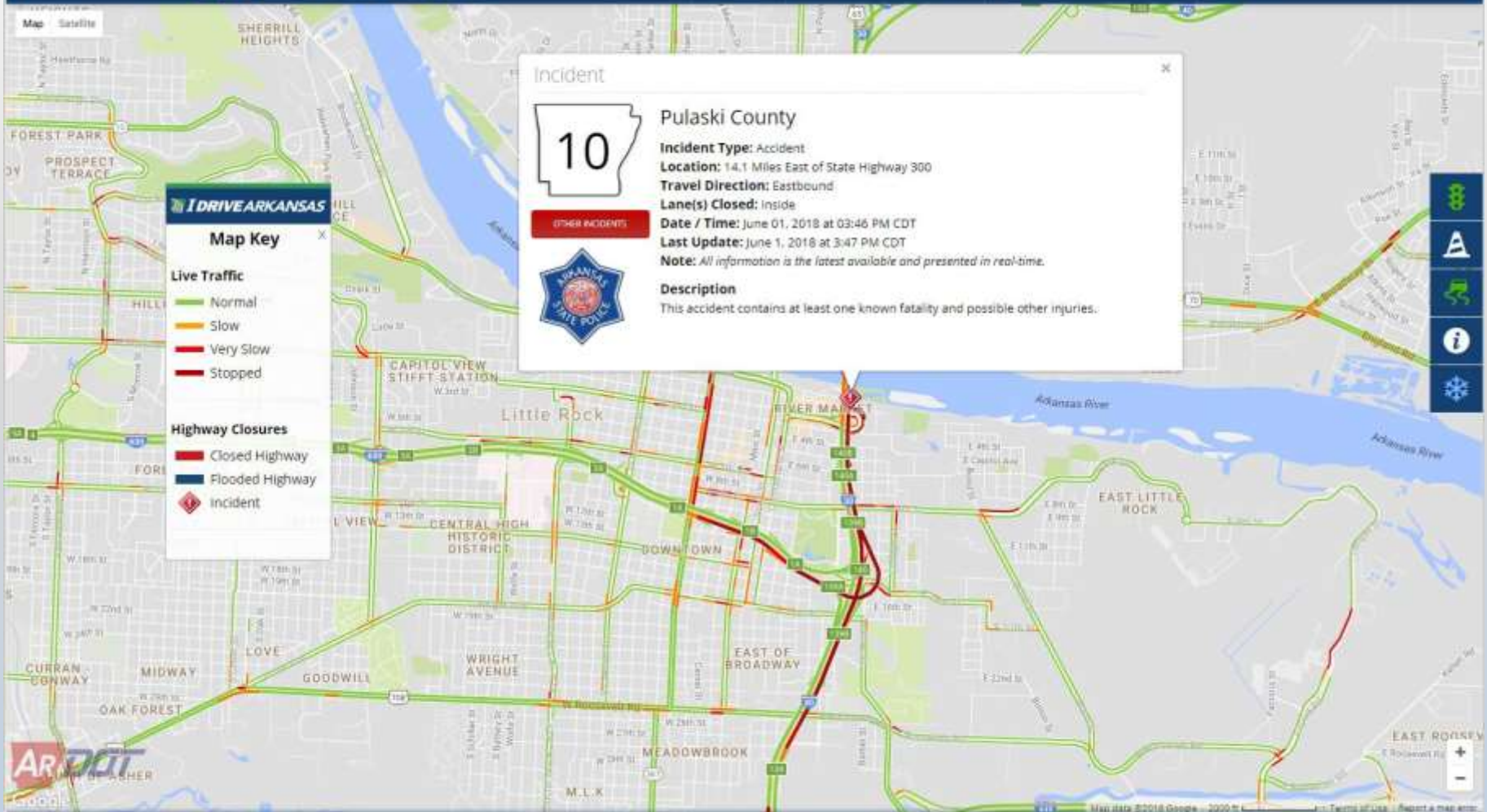
Major structural work on bridge.

**Travel Impact**

NB traffic will have to use Ark Hwy 163 SB traffic will have to use Ark Hwy 14







Incident

**Pulaski County**

**Incident Type:** Accident  
**Location:** 14.1 Miles East of State Highway 300  
**Travel Direction:** Eastbound  
**Lane(s) Closed:** Inside  
**Date / Time:** June 01, 2018 at 03:46 PM CDT  
**Last Update:** June 1, 2018 at 3:47 PM CDT  
**Note:** All information is the latest available and presented in real-time.

**Description**  
 This accident contains at least one known fatality and possible other injuries.

[OTHER INCIDENTS](#)

**IDRIVE ARKANSAS**

**Map Key**

**Live Traffic**

- Normal
- Slow
- Very Slow
- Stopped

**Highway Closures**

- Closed Highway
- Flooded Highway
- Incident

- 
- 
- 
- 
-

Map Satellite

**IDRIVE ARKANSAS**

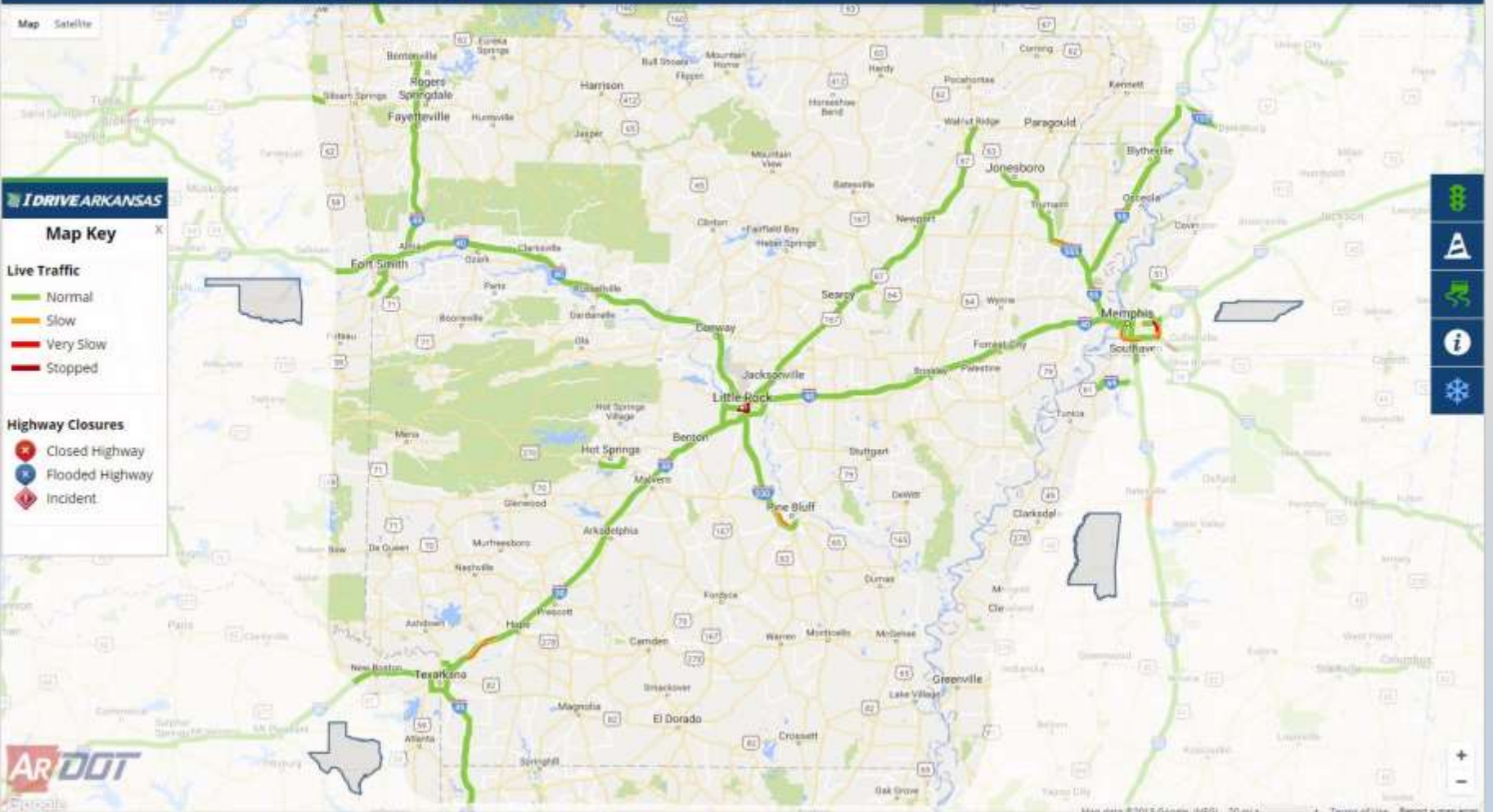
**Map Key**

**Live Traffic**

- Normal
- Slow
- Very Slow
- Stopped

**Highway Closures**

- Closed Highway
- Flooded Highway
- Incident



Vertical navigation sidebar containing icons for:

- Live Traffic (green traffic light icon)
- Map (white 'A' icon)
- Construction Programs (green road with orange cone icon)
- Travel Information Report (white 'i' icon)
- Contact (blue snowflake icon)



Map Satellite

**IDRIVE ARKANSAS**

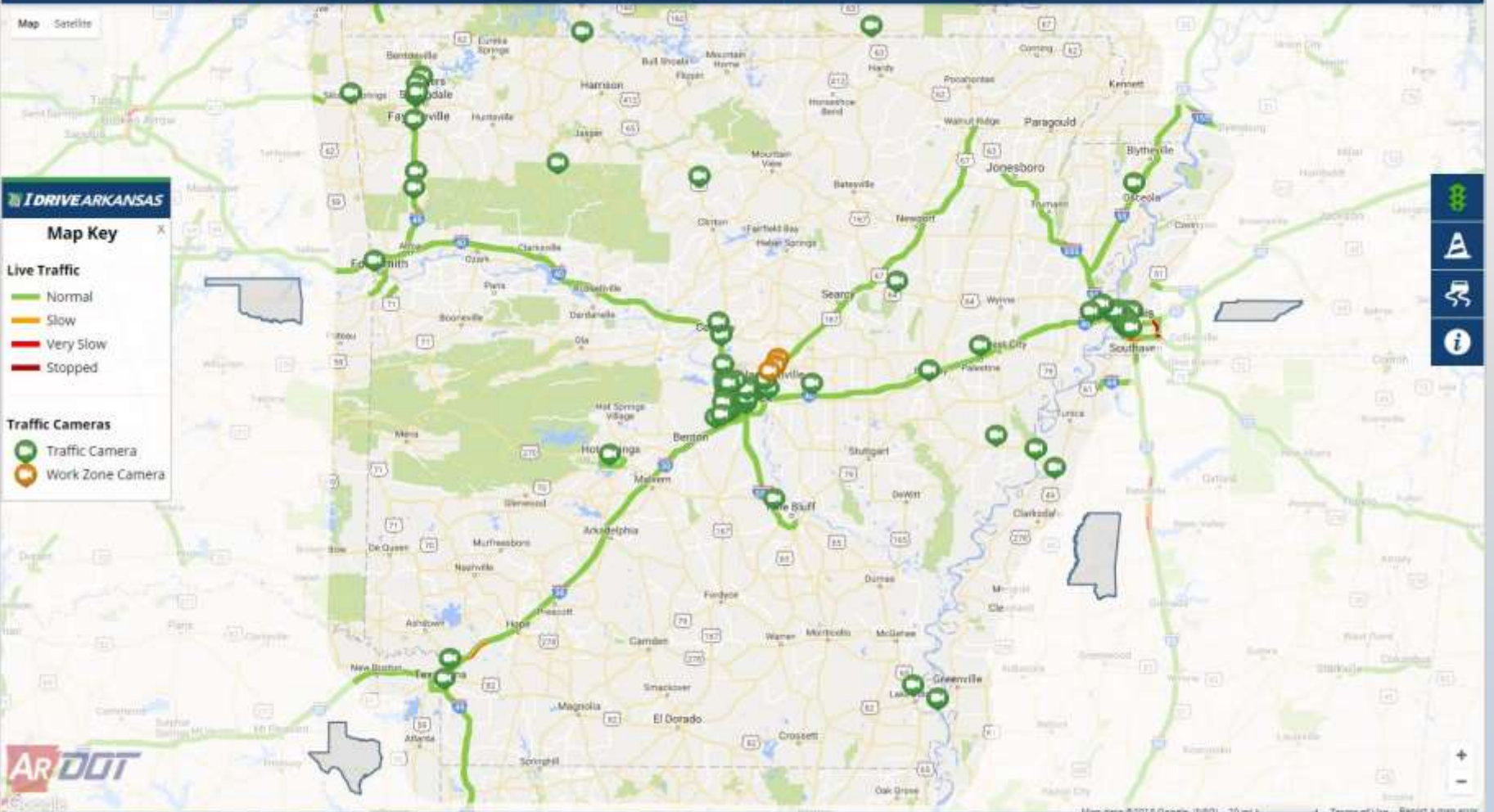
**Map Key**

**Live Traffic**

- Normal
- Slow
- Very Slow
- Stopped

**Traffic Cameras**

- Traffic Camera
- Work Zone Camera



**IDRIVE ARKANSAS**

Map Construction Programs Travel Information Report Contact

Map Satellite Terrain

**IDRIVE ARKANSAS**

**Map Key**

**Live Traffic**

- Normal
- Slow
- Very Slow
- Stopped

**Traffic Cameras**

- Traffic Camera
- Work Zone Camera

©2018, Arkansas Department of Transportation

Acceptable Use | Privacy | Feedback



Map Satellite

### I DRIVE ARKANSAS

#### Map Key

##### Live Traffic

- Normal
- Slow
- Very Slow
- Stopped

##### Traffic Cameras

- Traffic Camera
- Work Zone Camera

### Traffic Camera



Interstate 30



Camera View

6015

REPORT A PROBLEM  
TERMS OF USE



















Map Satellite

Terrain

**IDRIVE ARKANSAS**

**Map Key**

**Live Traffic**

- Normal
- Slow
- Very Slow
- Stopped

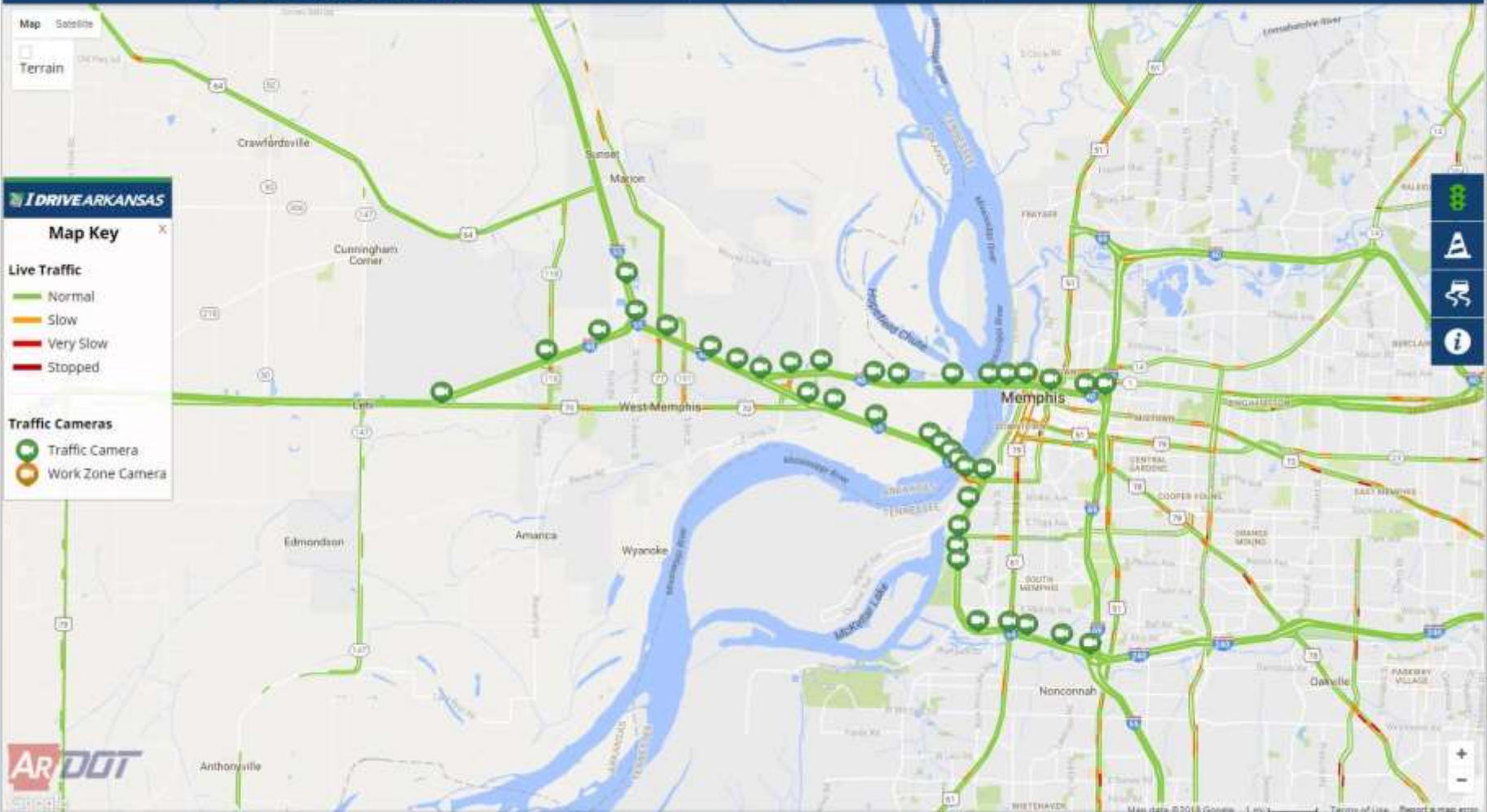
**Traffic Cameras**

- Traffic Camera
- Work Zone Camera

- 
- 
- 
- 

+

-





16N

I-55 N/O MS RIVER 0.7

I DRIVE ARKANSAS

[Map](#)
[Construction Programs](#)
[Travel Information Report](#)
[Contact](#)

Map Satellite

I DRIVE ARKANSAS

### Map Key

**Live Traffic**

- Normal
- Slow
- Very Slow
- Stopped

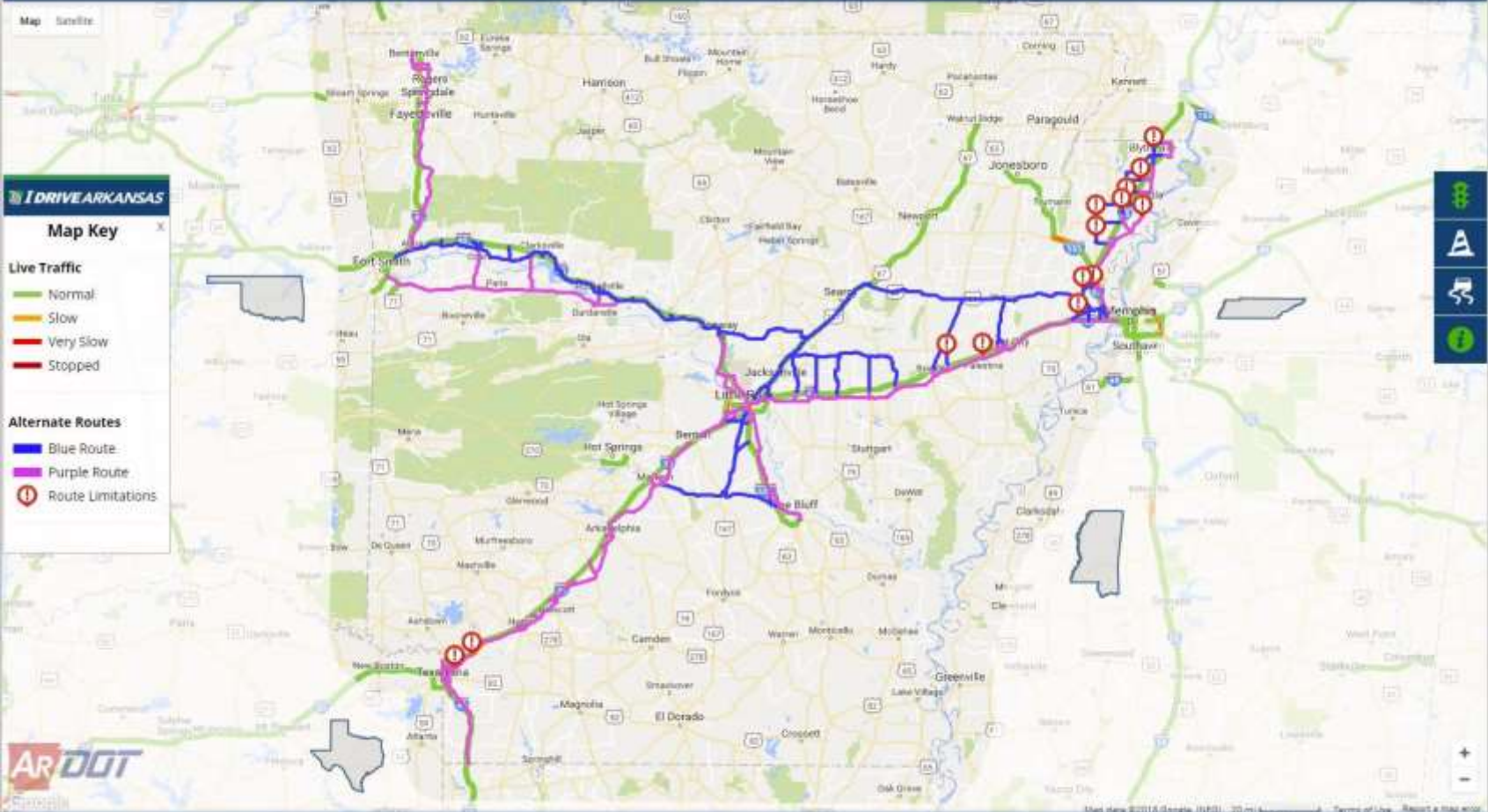
**Highway Closures**

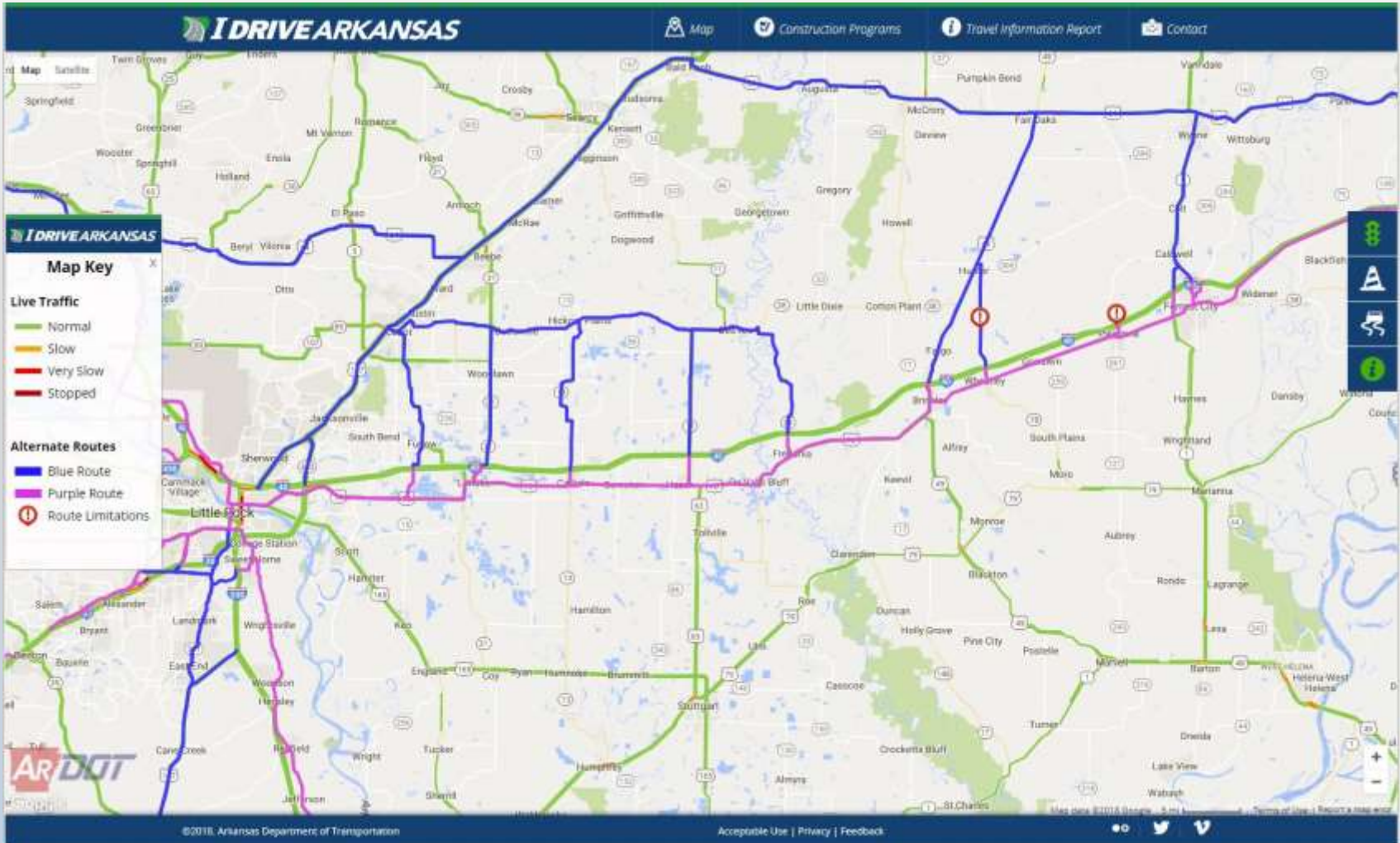
- ✖ Closed Highway
- ✖ Flooded Highway
- ⬇ Incident

©2016 Arkansas Department of Transportation

Acceptable Use | Privacy | Feedback







I DRIVE ARKANSAS

[Map](#)
[Construction Programs](#)
[Travel Information Report](#)
[Contact](#)

**I DRIVE ARKANSAS**

**Map Key**

**Live Traffic**

- Normal
- Slow
- Very Slow
- Stopped

**Alternate Routes**

- Blue Route
- Purple Route
- Ⓢ Route Limitations

**Weight Restriction**

218

**Weight Restricted Road**

**Gross Weight:** 64,000 lbs.

**Single Axle (8 tons):** 18,000 lbs.

**Tandem Axle (15 Tons):** 30,000 lbs.

[View Information](#)

©2018 Arkansas Department of Transportation Acceptable Use | Privacy | Feedback



I DRIVE ARKANSAS

Map
Construction Programs
Travel Information Report
Contact

Map Satellite

I DRIVE ARKANSAS

### Map Key

**Live Traffic**

- Normal
- Slow
- Very Slow
- Stopped

**Highway Closures**

- ✖ Closed Highway
- ✖ Flooded Highway
- ⬇ Incident

🚦
📍
📄
📍
❄️

©2016 Arkansas Department of Transportation

Acceptable Use | Privacy | Feedback

Map data ©2016 Google, INEGI 20 mi

🏠 🌐 📄

I DRIVE ARKANSAS

[Map](#)
[Construction Programs](#)
[Travel Information Report](#)
[Contact](#)

**Map Key** X

**Facilities**

- P Park and Ride Lot
- P Closed

©2018 Arkansas Department of Transportation
Acceptable Use | Privacy | Feedback

I DRIVE ARKANSAS

 Map
 Construction Programs
 Travel Information Report
 Contact

Map Satellite

I DRIVE ARKANSAS

Map Key

**Live Traffic**

- Normal
- Slow
- Very Slow
- Stopped

**Highway Closures**

- ✕ Closed Highway
- ✕ Flooded Highway
- ⬇ Incident

©2016 Arkansas Department of Transportation

Acceptable Use | Privacy | Feedback

Map data ©2016 Google, IAGI, 20 mi

# I DRIVE ARKANSAS

Map

Construction Programs

Travel Information Report

Contact

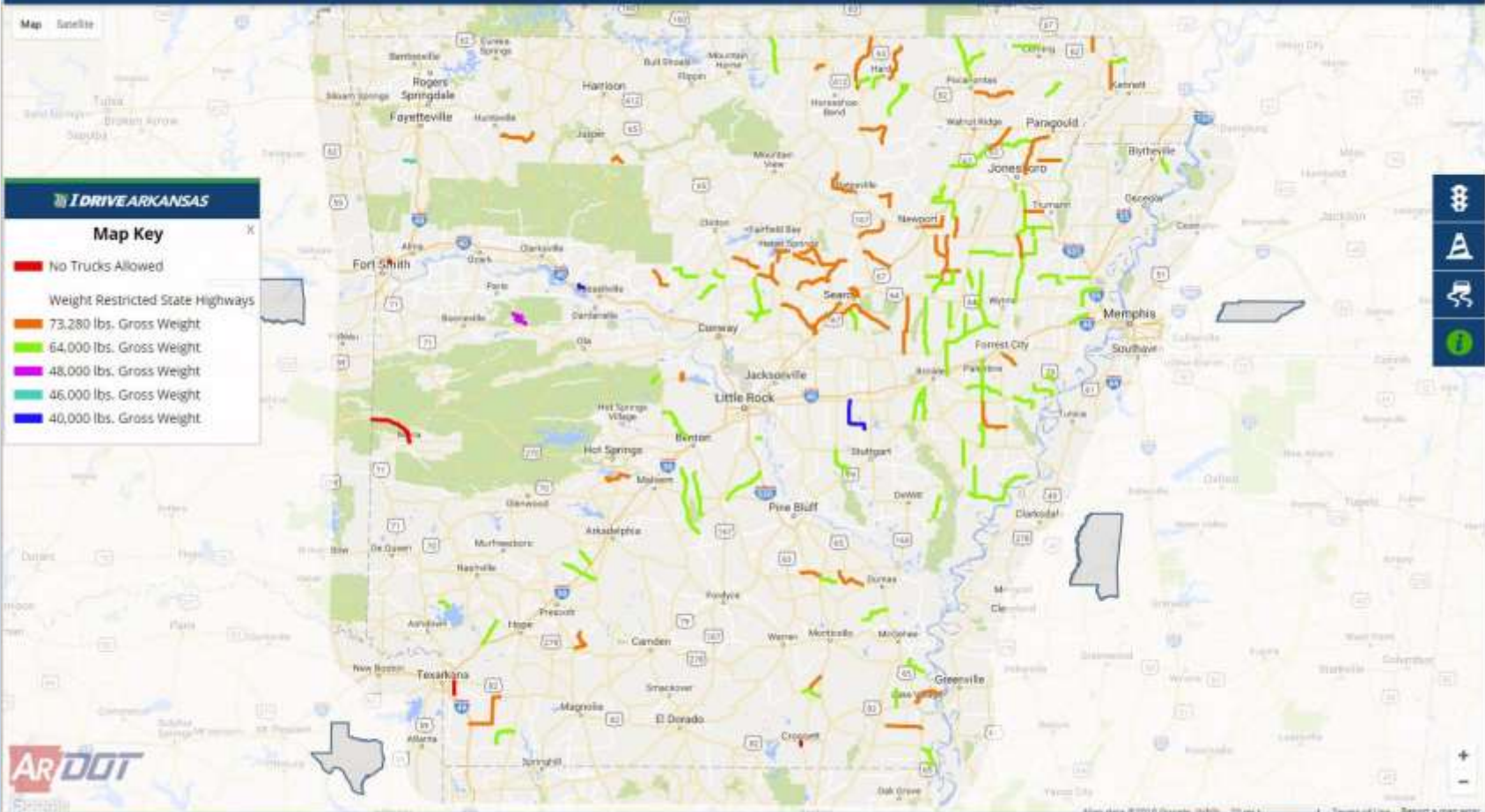
Map Satellite

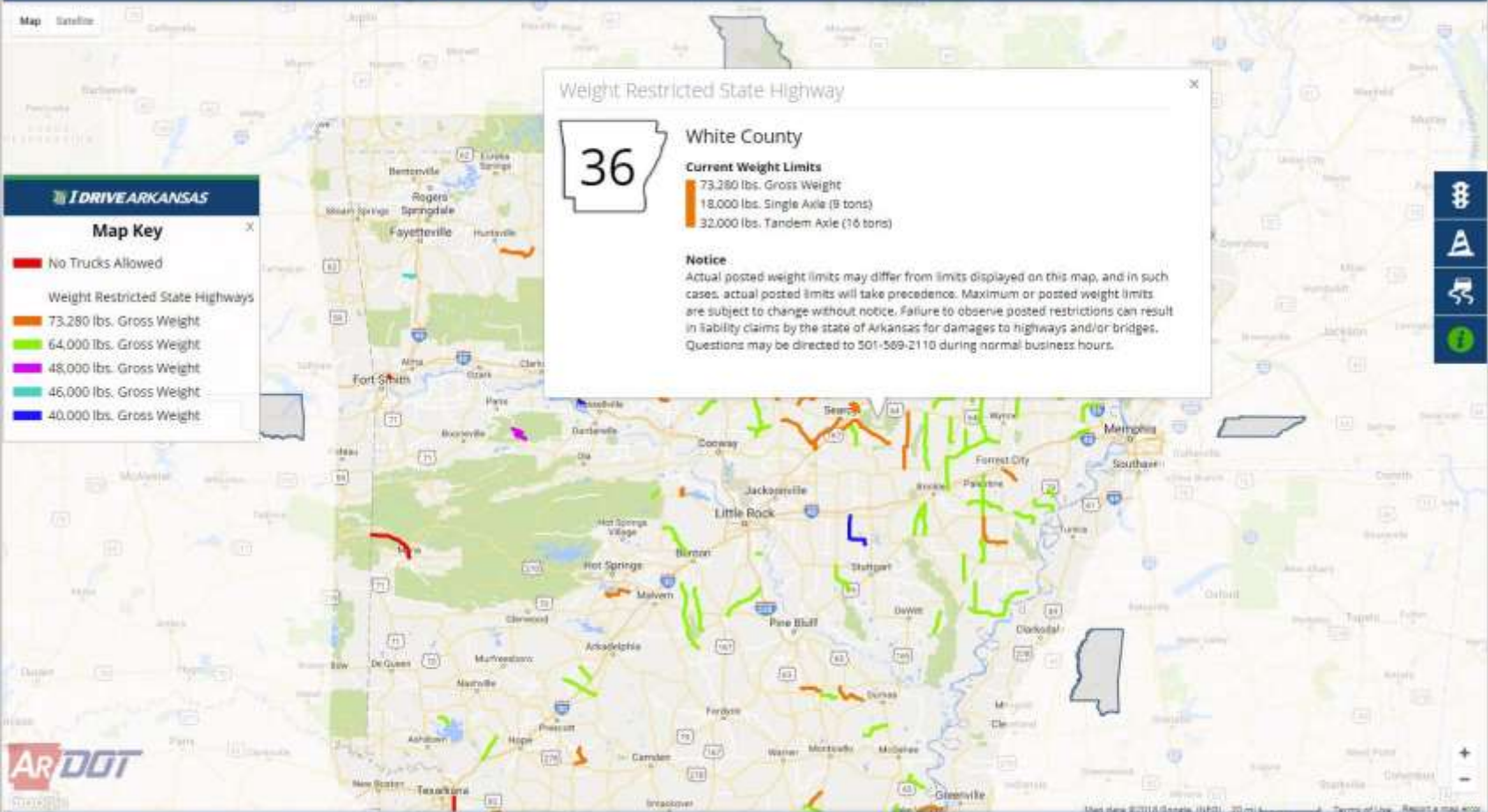
**I DRIVE ARKANSAS**

**Map Key**

- █ No Trucks Allowed
- Weight Restricted State Highways**
- █ 73,280 lbs. Gross Weight
- █ 64,000 lbs. Gross Weight
- █ 48,000 lbs. Gross Weight
- █ 46,000 lbs. Gross Weight
- █ 40,000 lbs. Gross Weight

- 
- 
- 
- 





Weight Restricted State Highway



**White County**

**Current Weight Limits**

- 73,280 lbs. Gross Weight
- 18,000 lbs. Single Axle (8 tons)
- 32,000 lbs. Tandem Axle (16 tons)

**Notice**

Actual posted weight limits may differ from limits displayed on this map, and in such cases, actual posted limits will take precedence. Maximum or posted weight limits are subject to change without notice. Failure to observe posted restrictions can result in liability claims by the state of Arkansas for damages to highways and/or bridges. Questions may be directed to 501-569-2110 during normal business hours.

**Map Key**

- █ No Trucks Allowed
- Weight Restricted State Highways**
- █ 73,280 lbs. Gross Weight
- █ 64,000 lbs. Gross Weight
- █ 48,000 lbs. Gross Weight
- █ 46,000 lbs. Gross Weight
- █ 40,000 lbs. Gross Weight

I DRIVE ARKANSAS

Map
Construction Programs
Travel Information Report
Contact

**Map Key**

**Live Traffic**

- Normal
- Slow
- Very Slow
- Stopped

**Highway Closures**

- ✖ Closed Highway
- ✖ Flooded Highway
- ⬇ Incident

©2016 Arkansas Department of Transportation

Acceptable Use | Privacy | Feedback

Map data ©2016 Google, INEGI 20 mi

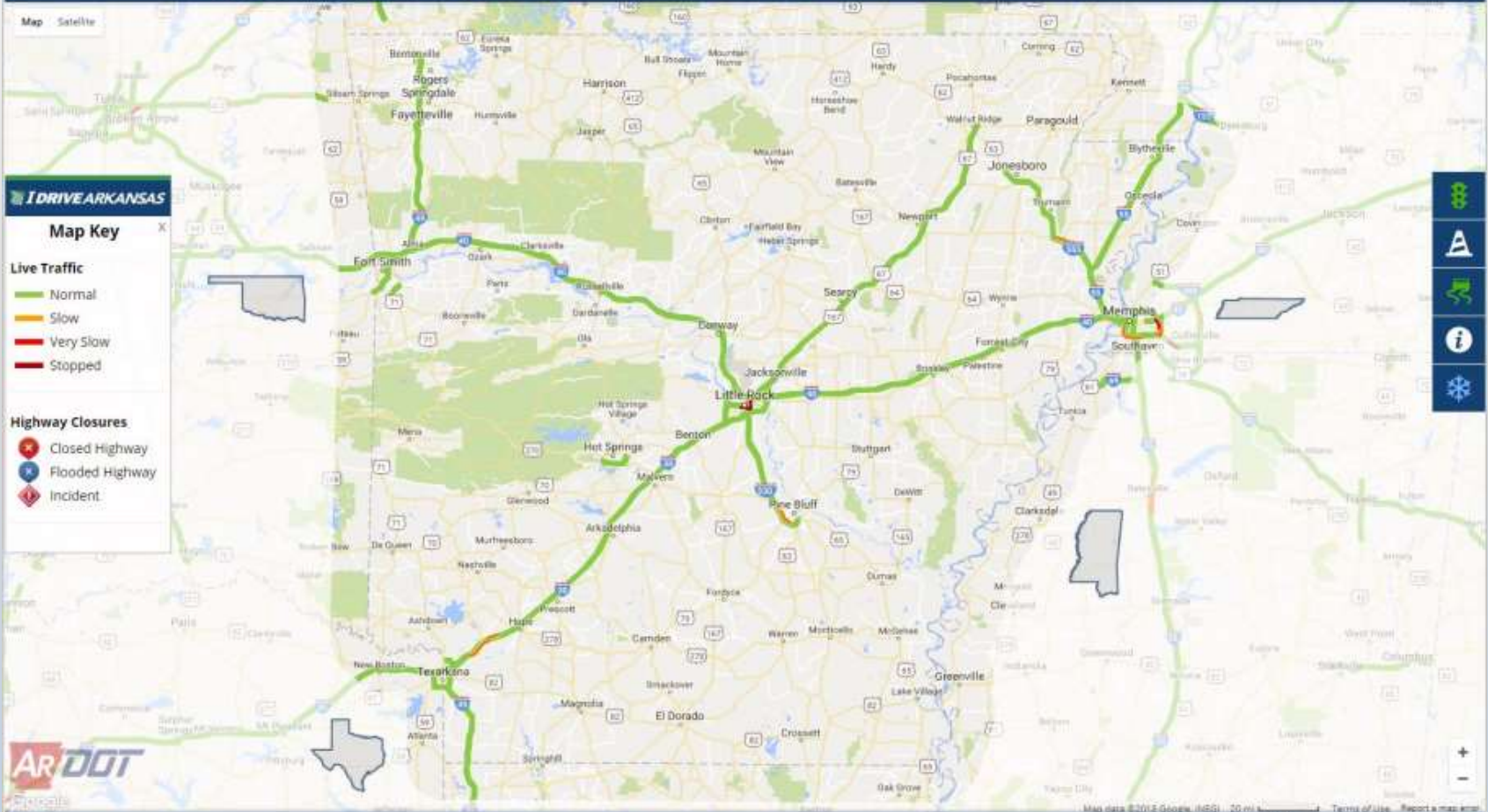
**I DRIVE ARKANSAS** [Map](#) [Construction Programs](#) [Travel Information Report](#) [Contact](#)

Map Satellite

**I DRIVE ARKANSAS**

**Map Key**

- Weight Restricted State Bridge



**IDRIVE ARKANSAS**

**Map Key**

**Live Traffic**

- Normal
- Slow
- Very Slow
- Stopped

**Highway Closures**

- Closed Highway
- Flooded Highway
- Incident

- Map Style
- Layers
- Info
- Weather







# I DRIVE ARKANSAS

Map

Construction Programs

Travel Information Report

Contact

Map Satellite

## I DRIVE ARKANSAS

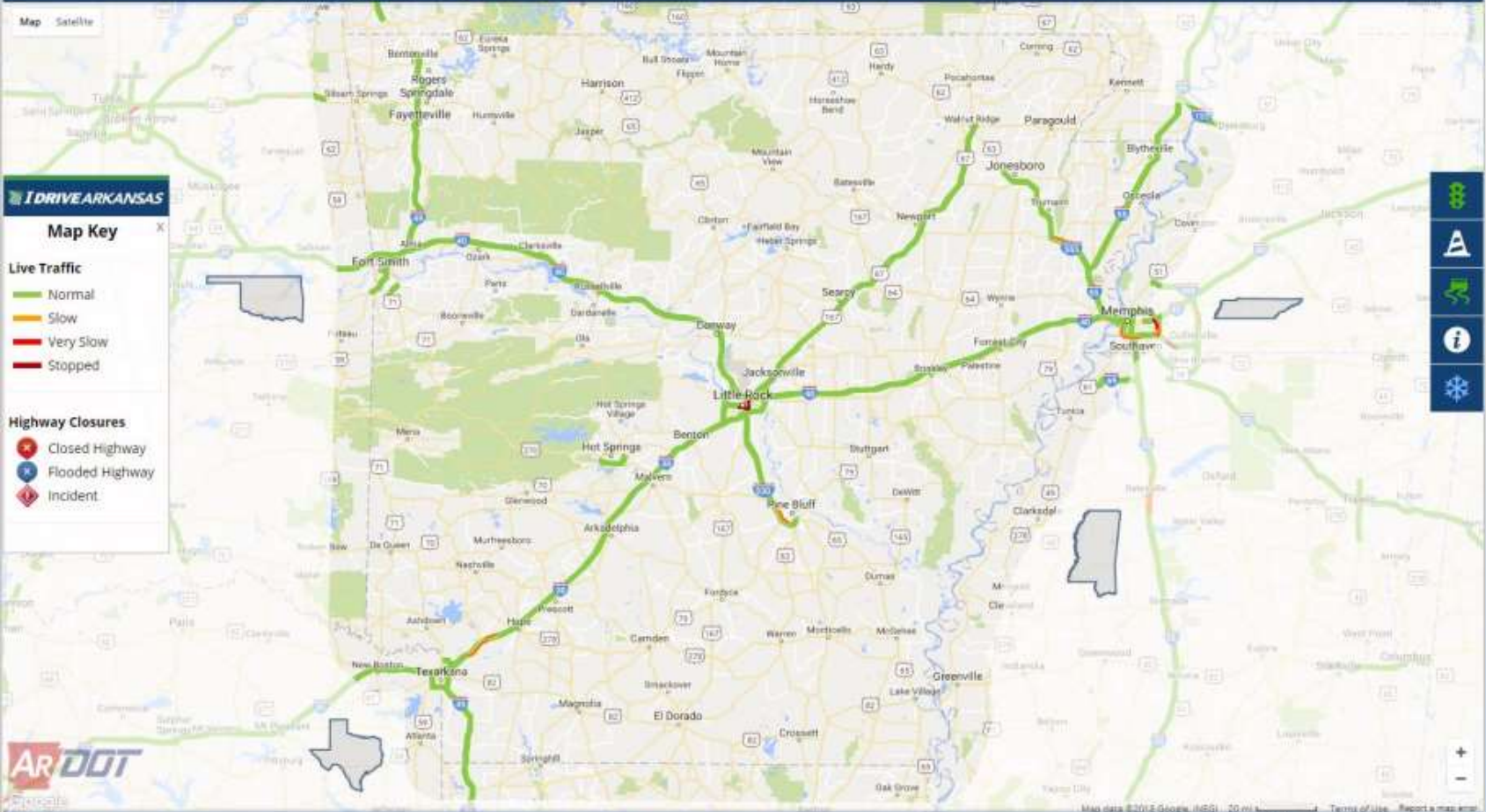
### Map Key

#### Live Traffic

- Normal
- Slow
- Very Slow
- Stopped

#### Highway Closures

- ✖ Closed Highway
- ✖ Flooded Highway
- ⬇ Incident



- 
- 
- 
-



### Sign-in to ACTIS

**Username**

**Password**

Enter

[Forgot Password?](#)

Accounts



Email Management



Highway Closures



Incidents



Facilities



Winter Weather



Reports



Posted Bridges



State Police



Highway Police



ADEM



Roles



Weather Management



Map Layers



iDrive Banner



Traffic Cameras



System Mgmt.



[Test] Highway Incident Report - Message (HTML)

File Message

Ignore X Meeting Move to: 7 To Manager  
Junk + Delete Reply Reply All Forward More + Team E-mail Done  
Delete Respond Quick Steps Move Move Actions Assign Mark Categorize Follow Translate Find Related Zoom Add  
Add Feedback

If there are problems with how this message is displayed, click here to view it in a web browser.

Sent: Wed 5/30/2018 12:48 PM

From: ACTIS <no-reply@ark.org>  
To: Straessle, Danny  
Cc:  
Subject: [Test] Highway Incident Report

## Pulaski County

**Status:** In Progress

**Incident Type:** Accident

**Route:** State Highway 338, Section 1

**Location:** 0.4 Miles East of State Highway 5

**Log Mile:** 0.5

**Direction:** All

**Lane(s) Impacted:** All

**Injury:** Yes

**Fatal:** Yes

**Hazmat:** No

**AaDOT:** District 06 / Pulaski 03 AMH

**AHP District:** 1

**ADEM Area:** Central

**Date / Time:** May 30, 2018 at 12:47 PM CDT

**By:** Arkansas State Police / Troop L

---

**Description**  
Multiple injuries and one confirmed fatality.

See the [Incident Report](#) on iDrive Arkansas for the latest information on highway conditions throughout the state.

This update is generated by **ACTIS** – the AaDOT Construction and Travel Information System.

Please do not reply.



Arkansas DOT

@myARDOT



Pulaski Co: I-40 WB right lane closed to repair damage from a previous accident. The closure will be tonight, 9:00 pm - 6:00 am between the Valentine Rd. & Hwy. 391 (Galloway) overpasses (mm 160 - 161) just E. of NLR. Monitor traffic at [IDriveArkansas.com](http://IDriveArkansas.com).

#artraffic



5:30 PM - 30 May 2018



Arkansas DOT

@myARDOT



Pulaski Co: (UPDATE) Hwy. 67/167 left lane is now open after wrecker removed stalled vehicle near LRAFB Exit 11 in Jacksonville. Monitor at [IDriveArkansas.com](http://IDriveArkansas.com). #artraffic #cnattraffic



6:45 AM - 25 May 2018





**Arkansas DOT**

@myARDOT



Advisory: Heavy rain has prompted numerous traffic delays and a flood warning in the Little Rock metro. Use caution if driving. Monitor weather at [weather.gov/lzk](http://weather.gov/lzk) Traffic conditions at [IDriveArkansas.com](http://IDriveArkansas.com). #artraffic #cnattraffic



4:30 PM - 23 May 2018



Arkansas DOT

@myARDOT



Hempstead Co: (UPDATE) I-30 WB left lane is open W. of Hope (mm 20). The right lane will remain closed for several hours. WB drivers should consider Exits 46 or 44 or Exit 31 to Hwy. 67 as an alternate route. Monitor traffic at [IDriveArkansas.com](http://IDriveArkansas.com). #artraffic #swattraffic



4:35 PM - 18 May 2018



Arkansas DOT

@myARDOT



Hempstead Co: (UPDATE) Police are not yet providing an estimate when lanes will re-open on I-30 WB near Hope (mm 20). ArDOT will provide updates when we receive them. Thanks for your patience. Monitor at [IDriveArkansas.com](http://IDriveArkansas.com). #artraffic #swattraffic



1:16 PM - 18 May 2018

# I DRIVE ARKANSAS

Map

Construction Programs

Travel Information Report

Contact

Map Satellite

## I DRIVE ARKANSAS

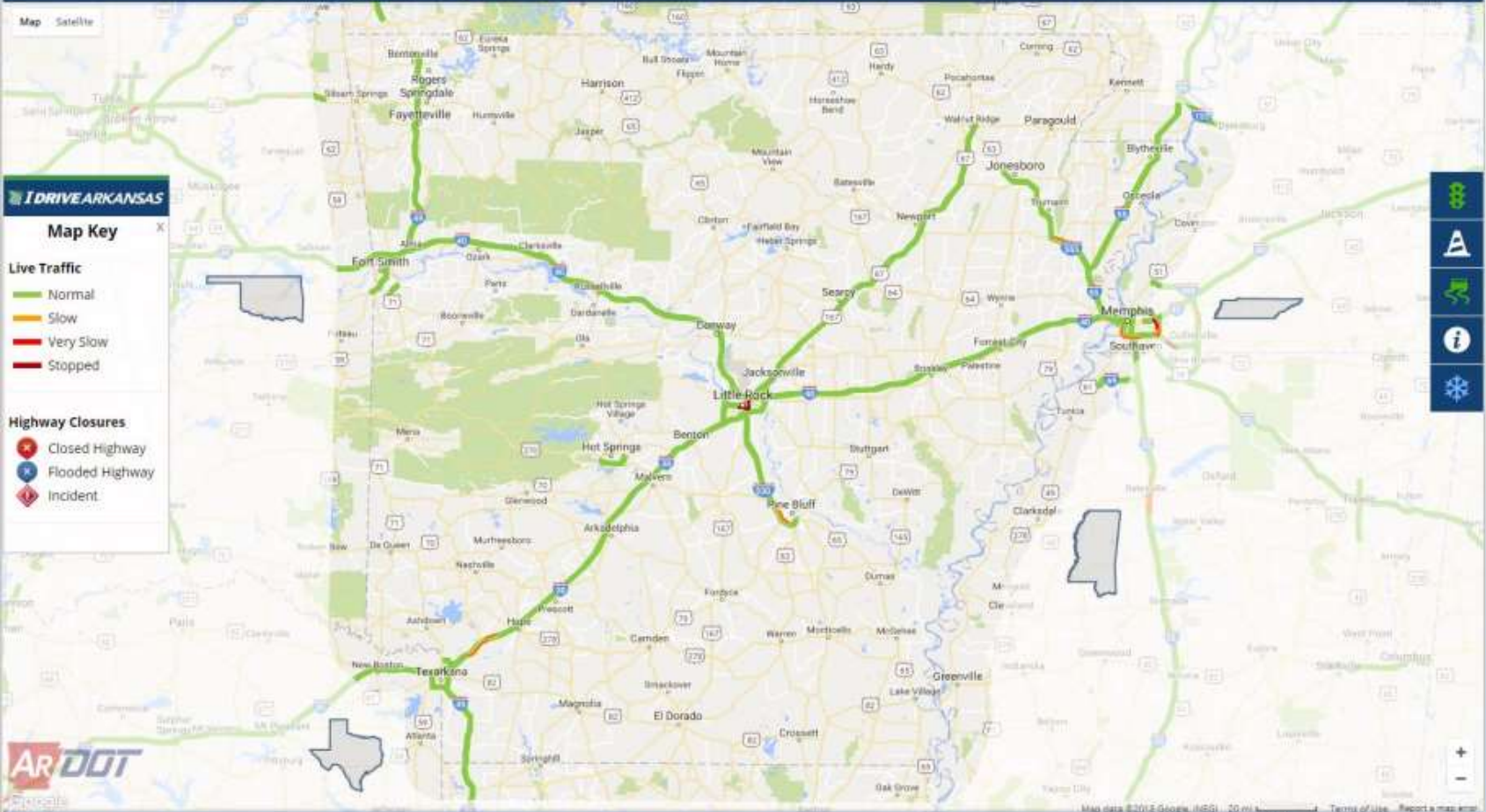
### Map Key

#### Live Traffic

- Normal
- Slow
- Very Slow
- Stopped

#### Highway Closures

- ✖ Closed Highway
- ✖ Flooded Highway
- ⬇ Incident





**AR DOT**  
TRAFFIC MANAGEMENT CENTER




























Highway Incident Reports  
501-569-2469

The screenshot displays the 'I DRIVE ARKANSAS' mobile application interface. At the top, there is a blue header with a menu icon on the left, the text 'I DRIVE ARKANSAS' in the center, and a 'Key' button on the right. Below the header, the map view shows a region in Arkansas with various highways and cities. A white popup window titled 'Your Location' is centered on the map, displaying the following information:

- Interstate 430**
- County Number: 60**
- County: Pulaski**
- Route: Interstate 430**
- Section: 21**
- Log Mile: 7.03**
- Area: Pulaski 03**
- AMH Number: 6603**
- Route ID: 60x00430x210**
- Actual Distance from Route: 170.39 Feet**

The map background shows major highways like I-40, I-530, and I-63, and cities such as Little Rock, Benton, Hot Springs, and Stuttgart. At the bottom of the screen, there is a navigation bar with four icons: a traffic light, a road sign, a truck, and an information icon. The bottom of the map area includes the text 'Map data ©2018 Google, INEGI' and a scale bar for 20 miles.

<p>Accounts</p> 	<p>Email Management</p> 	<p>Highway Closures</p> 	<p>Incidents</p> 
<p>Facilities</p> 	<p>Winter Weather</p> 	<p>Reports</p> 	<p>Posted Bridges</p> 
<p>State Police</p> 	<p>Highway Police</p> 	<p>ADEM</p> 	<p>Roles</p> 
<p>Weather Management</p> 	<p>Map Layers</p> 	<p>iDrive Banner</p> 	<p>Traffic Cameras</p> 
<p>System Mgmt.</p> 			

- [Contact Us](#)
- [Ask a Question](#)
- [Report a Problem](#)
- [Report Littering](#)
- [Request a Map](#)
- [Adopt a Highway](#)
- [Feedback](#)

## Contact Us



### Central Office Headquarters

**Physical Address**  
 10324 Interstate 30 (Exit 130)  
 Little Rock, AR 72209  
 501-569-2000

**Mailing Address**  
 P.O. Box 2261  
 Little Rock, AR 72203

[Map It](#)



### AHTD Offices

Name	Address	Phone
<a href="#">Central Office Headquarters</a>	10324 Interstate 30 (Exit 130) Little Rock, AR 72209	501-569-2000
<a href="#">District One</a>	2701 U.S. Highway 64 Wynne, AR 72396	870-238-8144
<a href="#">District Two</a>	4900 Highway 65 South Pine Bluff, AR 71601	870-534-1612
<a href="#">District Three</a>	2911 Highway 29 North Hope, AR 71801	870-777-3457
<a href="#">District Four</a>	2001 East Highway 20 Fayetteville, AR 72703	479-783-2300



# Questions?

